

OpenAsset SharePoint Web Part Integration



OpenAsset Integration APIs

This document describes the integration of OpenAsset and the built in XML Viewer Web Part that comes as standard with SharePoint.

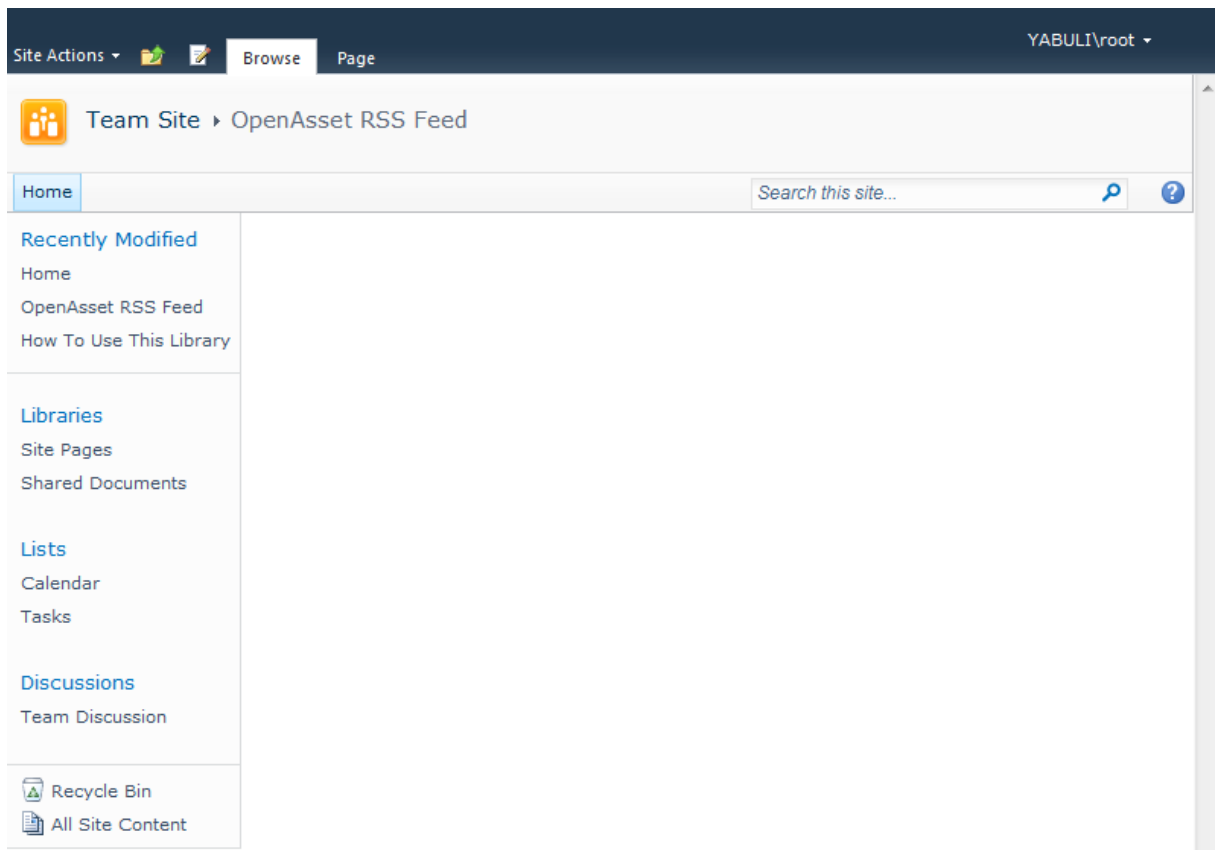
This technique can be used to display image matching search criteria, or from an album.

Contents

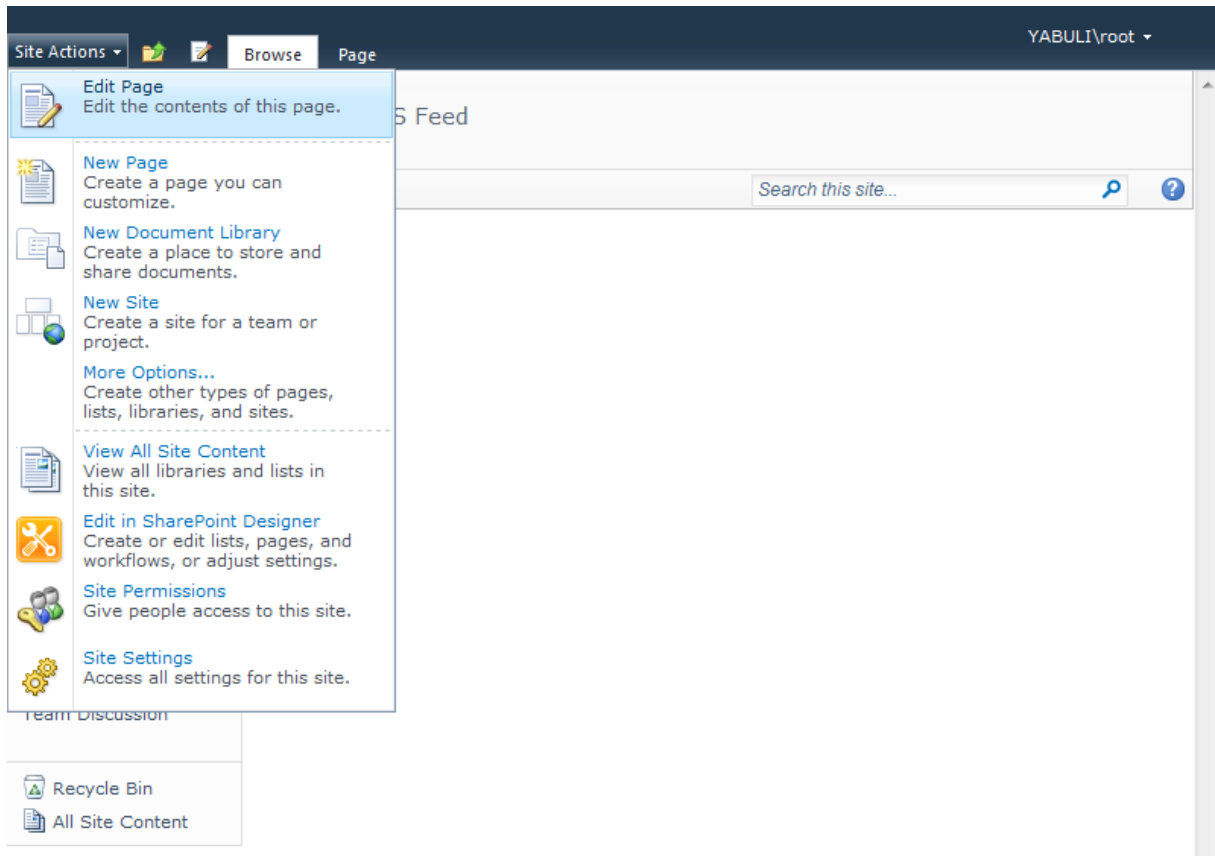
1	XML Viewer Web Part and RSS Feeds	4
1.1	Find a page to add the Web Part to	4
1.2	Edit the page	5
1.3	Insert new Web Part	6
1.4	Choose the XML Viewer Web Part	7
1.5	Open the Web Part properties and fill in XML link	8
1.6	Use the XSL editor	9
1.7	Apply the settings	11
1.8	Display larger thumbnails and search on keywords	12
1.9	Show a single image	13
1.10	Include the text from the caption field	14
1.10.1	Include the caption in the data source	14
1.10.2	Change the XSL to pull out the caption from the data source	15

1 XML Viewer Web Part and RSS Feeds

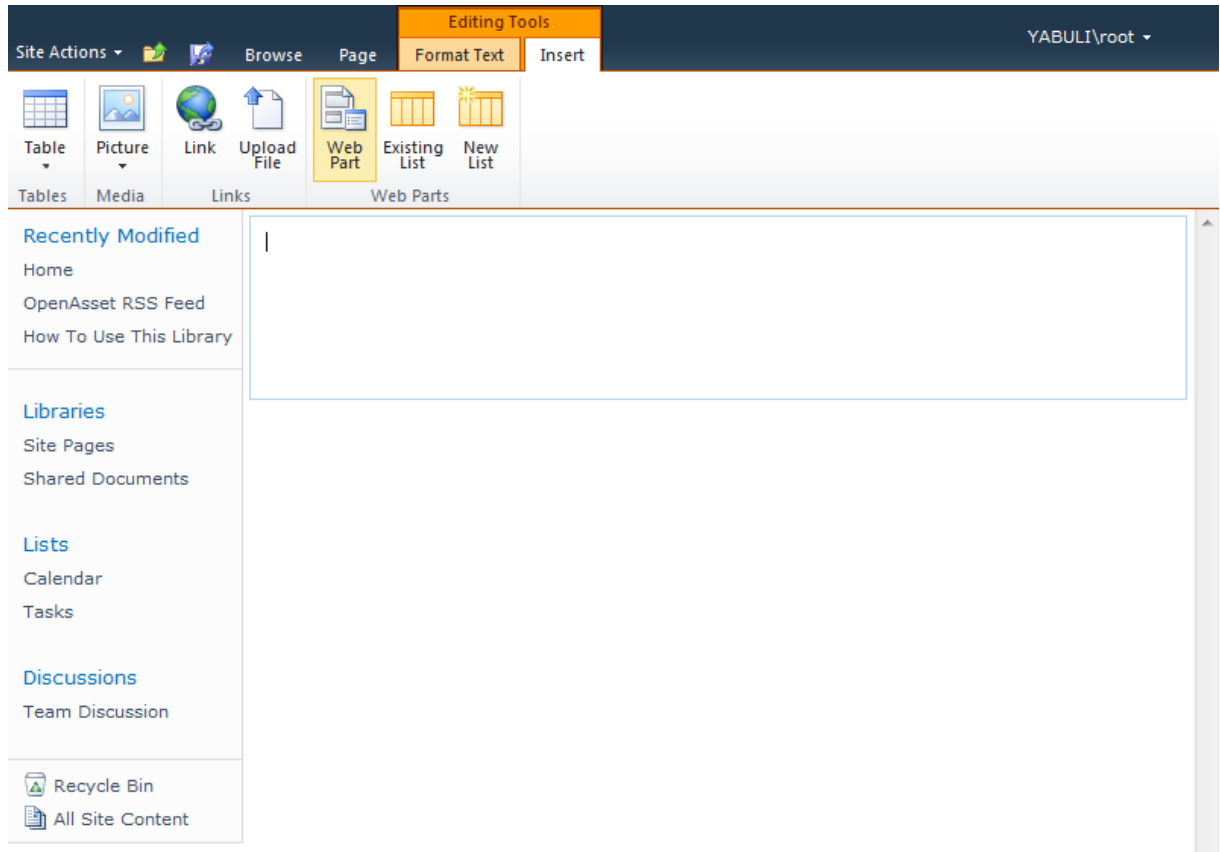
1.1 Find a page to add the Web Part to



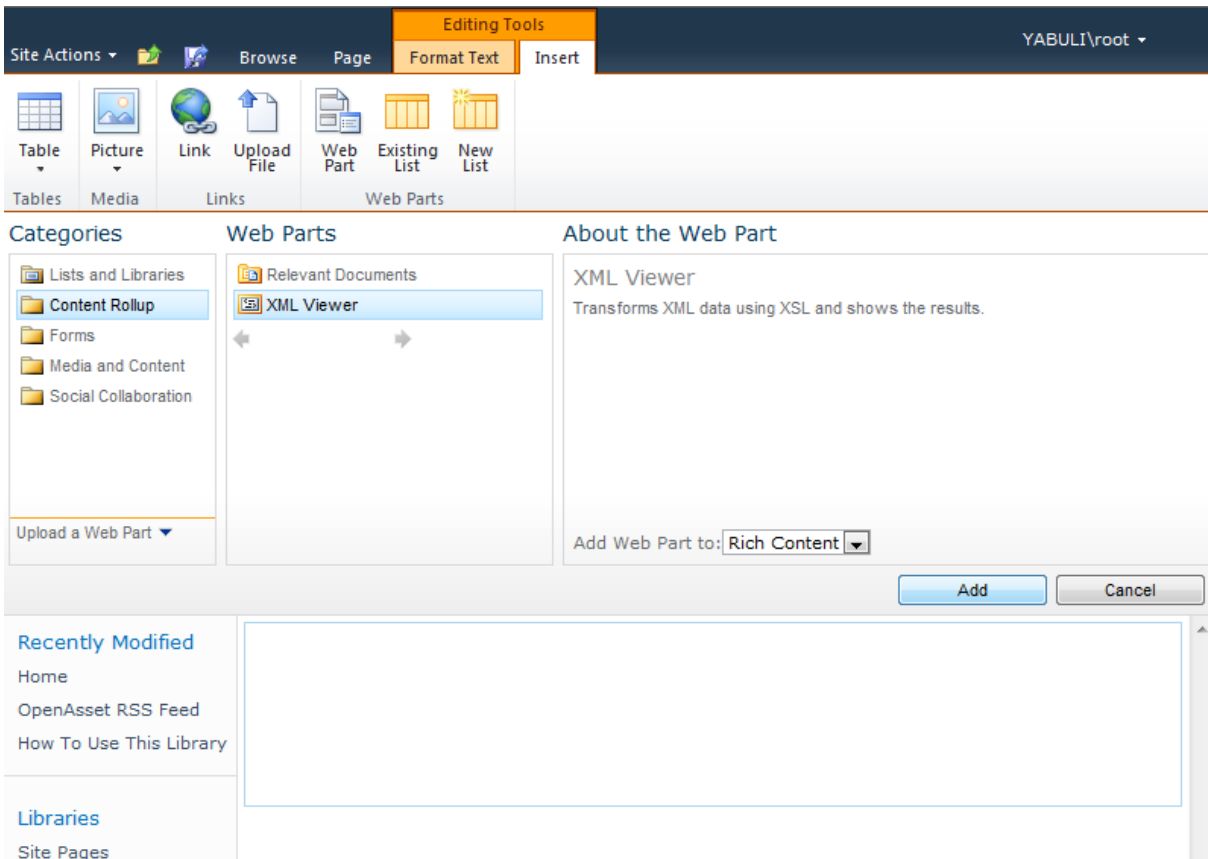
1.2 Edit the page



1.3 Insert new Web Part



1.4 Choose the XML Viewer Web Part



The screenshot shows the SharePoint interface for selecting a web part. At the top, the ribbon includes 'Editing Tools' with 'Format Text' and 'Insert' tabs. The 'Insert' tab is active, showing options for 'Table', 'Picture', 'Link', 'Upload File', 'Web Part', 'Existing List', and 'New List'. Below the ribbon, the 'Web Parts' gallery is displayed. The 'Categories' pane on the left shows 'Content Rollup' selected. The 'Web Parts' pane shows 'XML Viewer' selected under the 'Relevant Documents' category. The 'About the Web Part' pane provides details for the 'XML Viewer' web part, stating it 'Transforms XML data using XSL and shows the results.' Below this, there is a dropdown menu for 'Add Web Part to:' set to 'Rich Content', and 'Add' and 'Cancel' buttons. On the left side of the page, there are sections for 'Recently Modified' (Home, OpenAsset RSS Feed, How To Use This Library) and 'Libraries' (Site Pages).

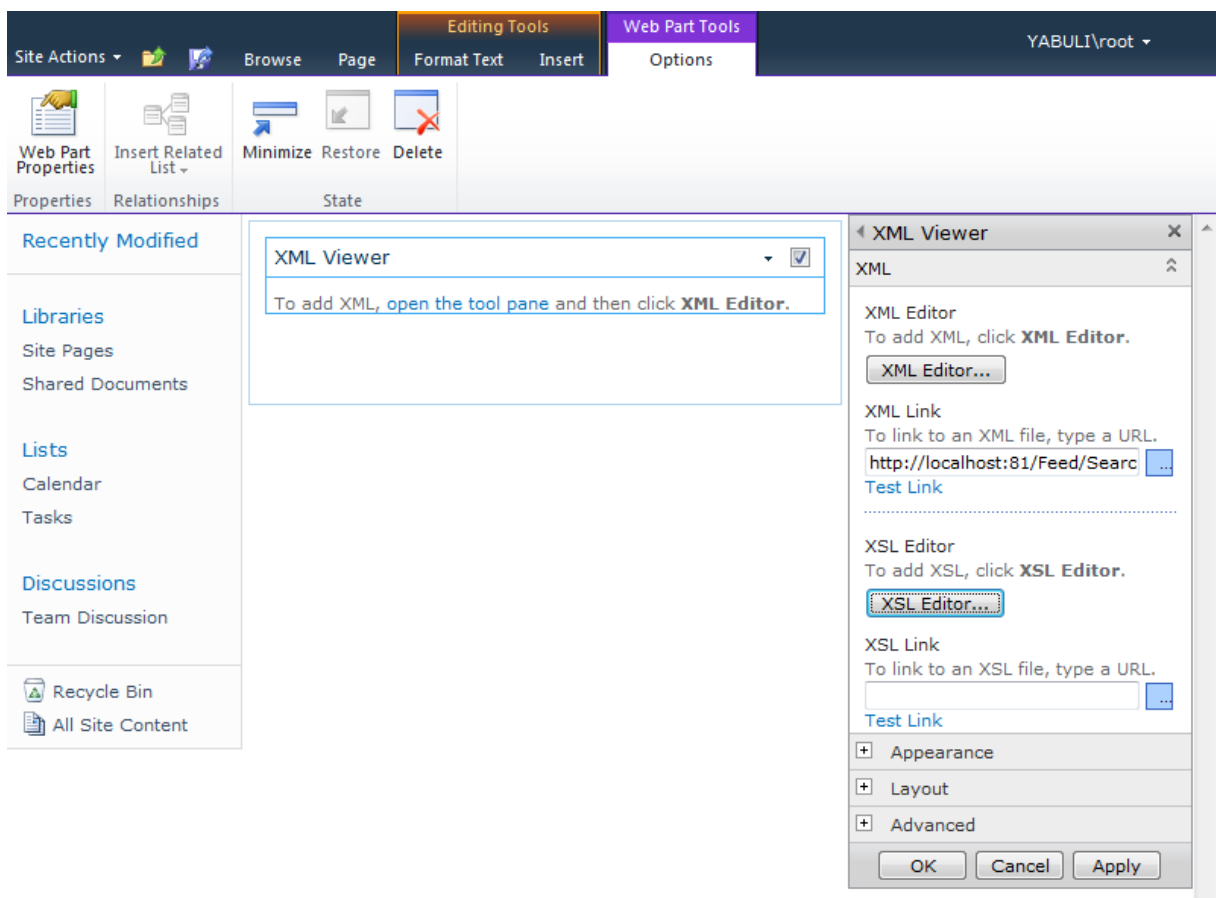
1.5 Open the Web Part properties and fill in XML link

Configure the XML Link field with the details of you server:

e.g.

`http://YOUR_SERVER_NAME/Feed/Search?`

`format=rss2&categoryCode=Projects&orderBy=dateUploadedDesc&imageSize=square&limit=20`



1.6 Use the XSL editor

Apply some XSL such as:

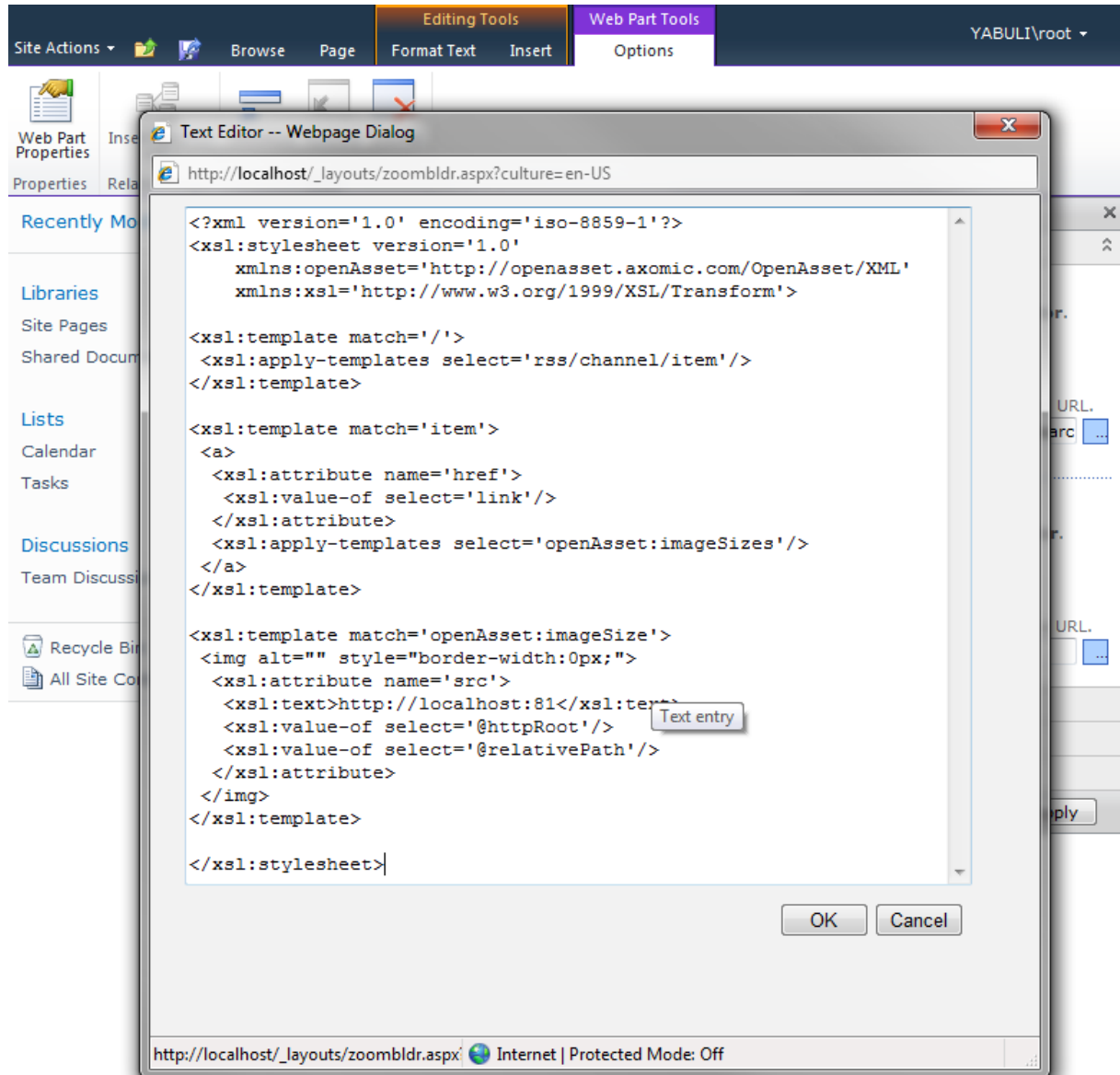
```
<?xml version='1.0' encoding='iso-8859-1'?>
<xsl:stylesheet version='1.0'
  xmlns:openAsset='http://openasset.axomic.com/OpenAsset/XML'
  xmlns:xsl='http://www.w3.org/1999/XSL/Transform'>

<xsl:template match='/'>
  <xsl:apply-templates select='rss/channel/item'/>
</xsl:template>

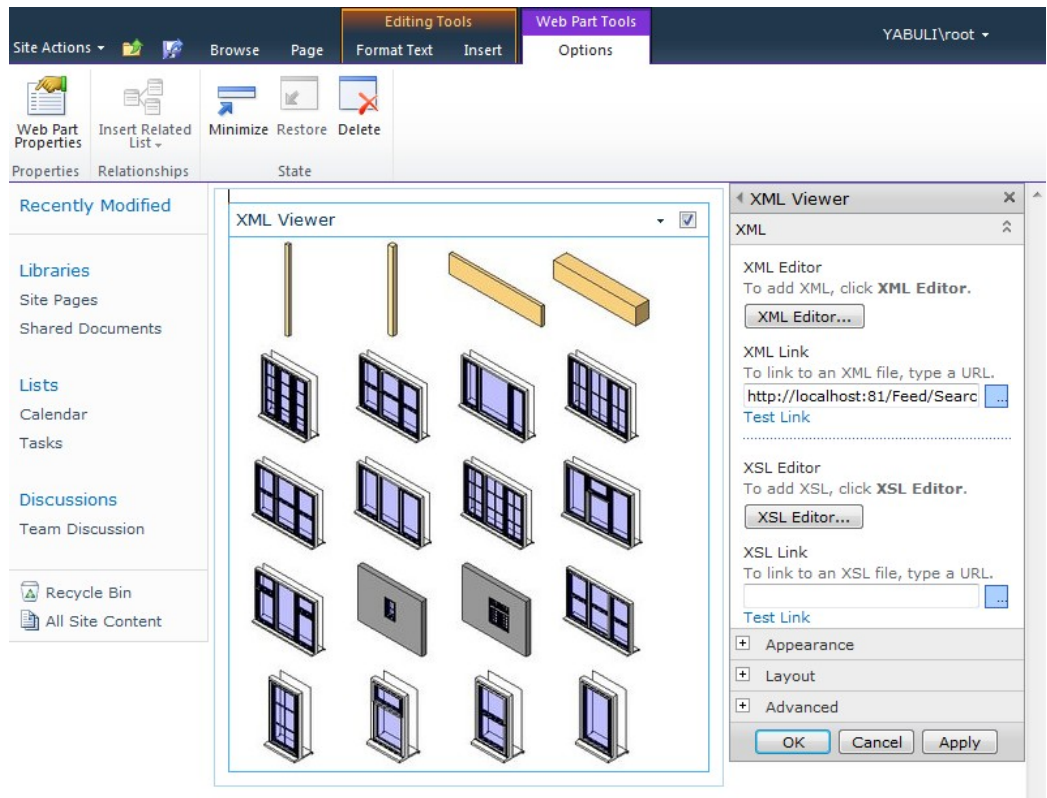
<xsl:template match='item'>
  <a>
    <xsl:attribute name='href'>
      <xsl:value-of select='link'/>
    </xsl:attribute>
    <xsl:apply-templates select='openAsset:imageSizes'/>
  </a>
</xsl:template>

<xsl:template match='openAsset:imageSize'>
  <img alt="" style="border-width:0px;">
    <xsl:attribute name='src'>
      <xsl:text>http://YOUR_SERVER_NAME</xsl:text>
      <xsl:value-of select='@httpRoot'/>
      <xsl:value-of select='@relativePath'/>
    </xsl:attribute>
  </img>
</xsl:template>

</xsl:stylesheet>
```



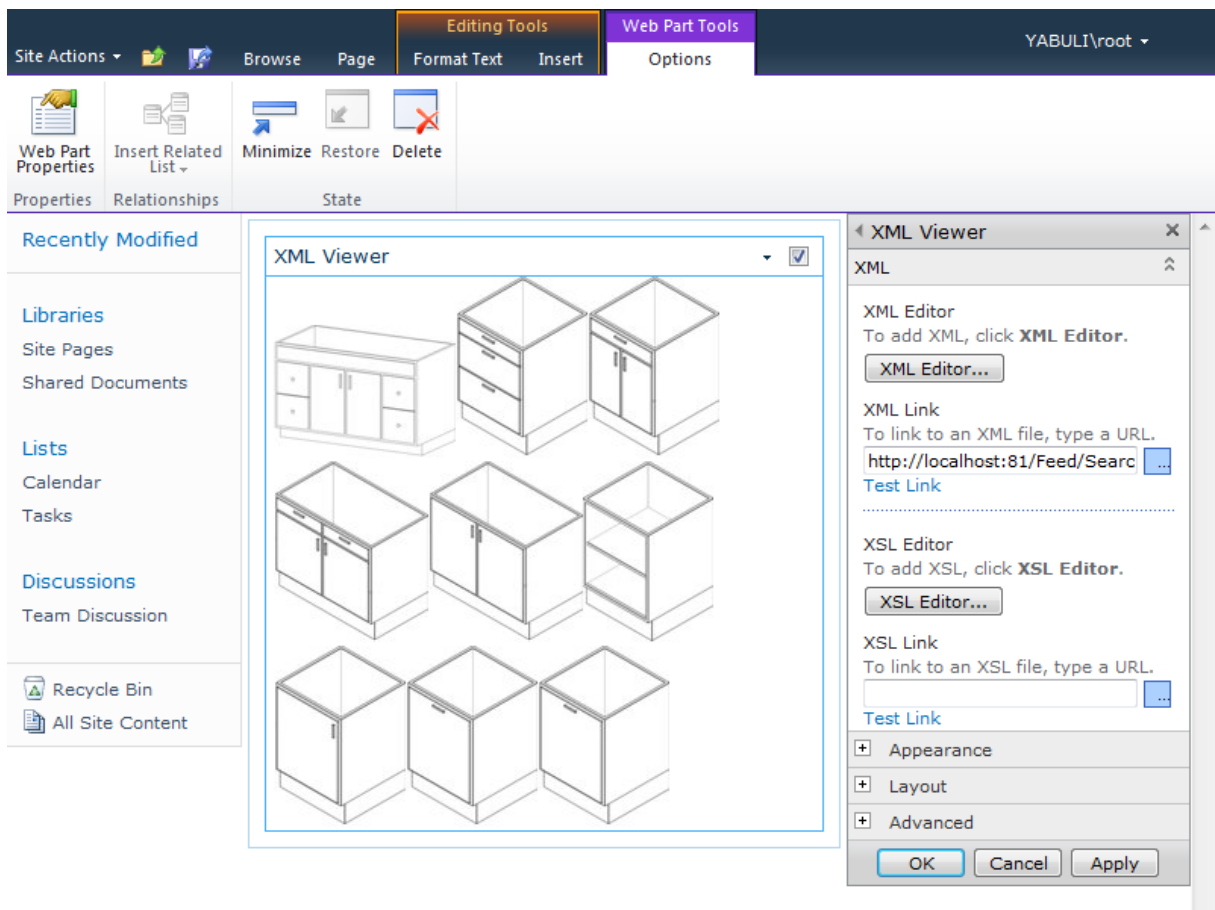
1.7 Apply the settings



1.8 Display larger thumbnails and search on keywords

You can change the size of the thumbnail included in the feed, adjust the number of results returned and search on particular keywords:

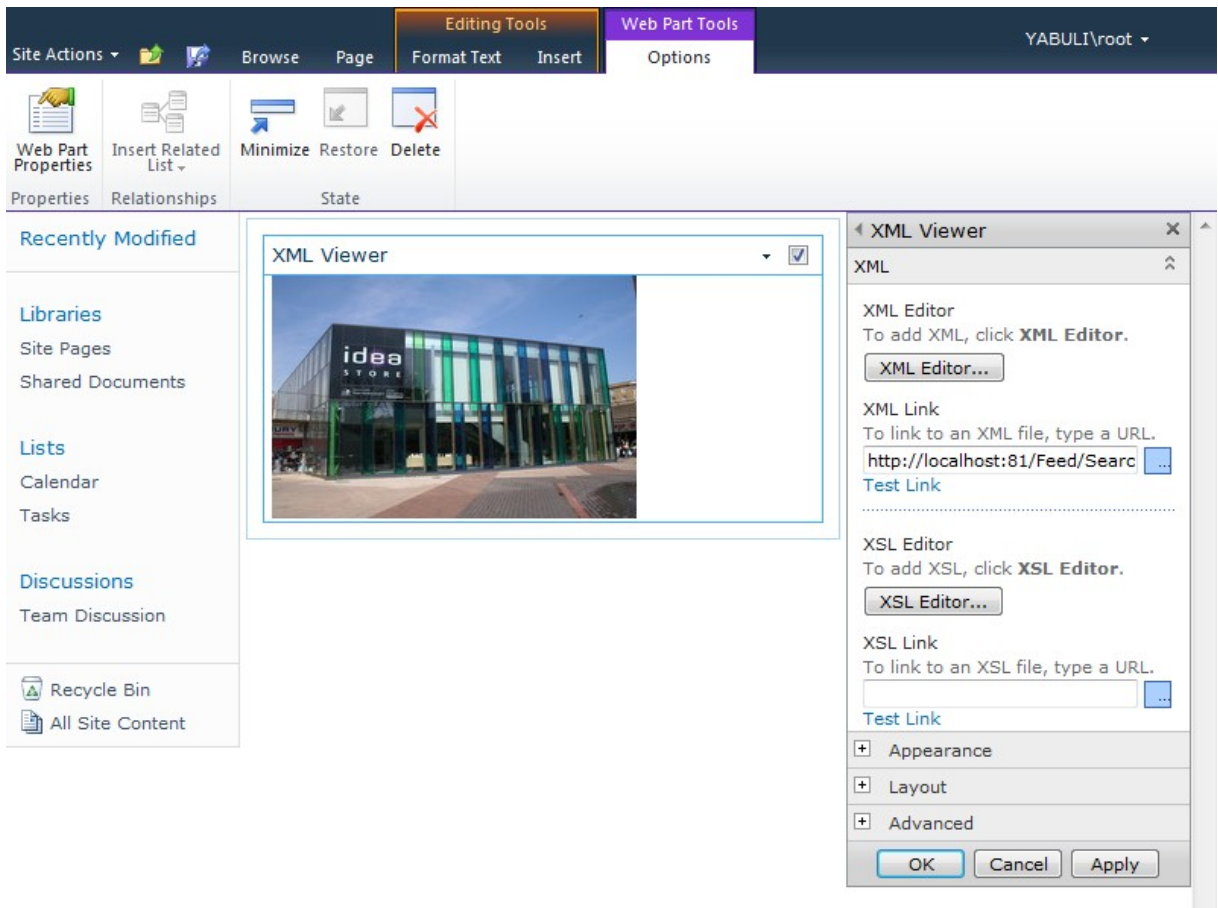
`http://YOUR_SERVER_NAME/Feed/Search?format=rss2&categoryCode=Projects&orderBy=dateUploadedDesc&imageSizes=thumbnail&limit=9&keywords=casework`



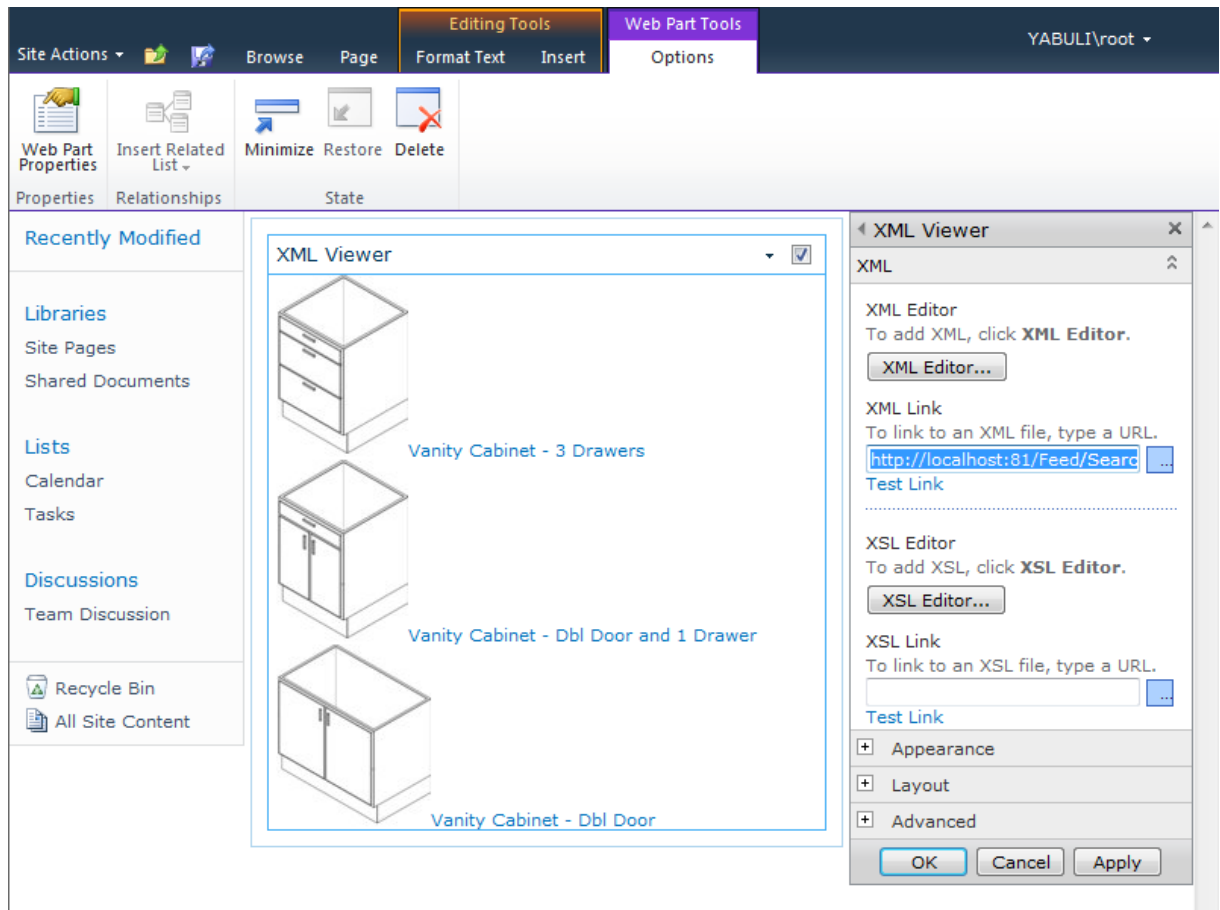
1.9 Show a single image

A single image can be found by using the filenames in the keywords attribute.

`http://YOUR_SERVER_NAME/Feed/Search?format=rss2&categoryCode=Projects&orderBy=dateUploadedDesc&imageSizes=small&limit=1&keywords=R_110328_N1.jpg`



1.10 Include the text from the caption field



To change the layout and include text fields, you need include the caption field in the data source and adjust the XSL to pull out and display the value.

1.10.1 Include the caption in the data source

`http://YOUR_SERVER_NAME/Feed/Search?
format=rss2&categoryCode=Projects&orderBy=dateUploadedDesc&imageSizes=thumb
nail&limit=3&keywords=casework&displayFields=caption`

1.10.2 Change the XSL to pull out the caption from the data source

```
<?xml version='1.0' encoding='iso-8859-1'?>
<xsl:stylesheet version='1.0'
  xmlns:openAsset='http://openasset.axomic.com/OpenAsset/XML'
  xmlns:xsl='http://www.w3.org/1999/XSL/Transform'>

<xsl:template match='/'>
<xsl:apply-templates select='rss/channel/item'/>
</xsl:template>

<xsl:template match='item'>
<a>
  <xsl:attribute name='href'>
    <xsl:value-of select='link'/>
  </xsl:attribute>
  <xsl:apply-templates select='openAsset:imageSizes'/>
  <xsl:value-of select='openAsset:displayFields/openAsset:caption'/>
</a>
<br/>
</xsl:template>

<xsl:template match='openAsset:imageSize'>
<img alt="" style="border-width:0px;">
  <xsl:attribute name='src'>
    <xsl:text>http://YOUR_SERVER_NAME</xsl:text>
    <xsl:value-of select='@httpRoot'/>
    <xsl:value-of select='@relativePath'/>
  </xsl:attribute>
</img>
</xsl:template>

</xsl:stylesheet>
```